

Site Preparation Specification Sheet

Due to continuing product improvements, Heartland reserves the right to amend specifications without notice. Dimensional specifications are provided for planning purposes only. For complete details see Installation Instructions that accompany each product before selecting cabinetry, making cutouts or beginning installation. Please contact Heartland Appliances Inc. before using this manual to ensure you are using the most up to date information as it applies to the product you are purchasing.



Clearances:

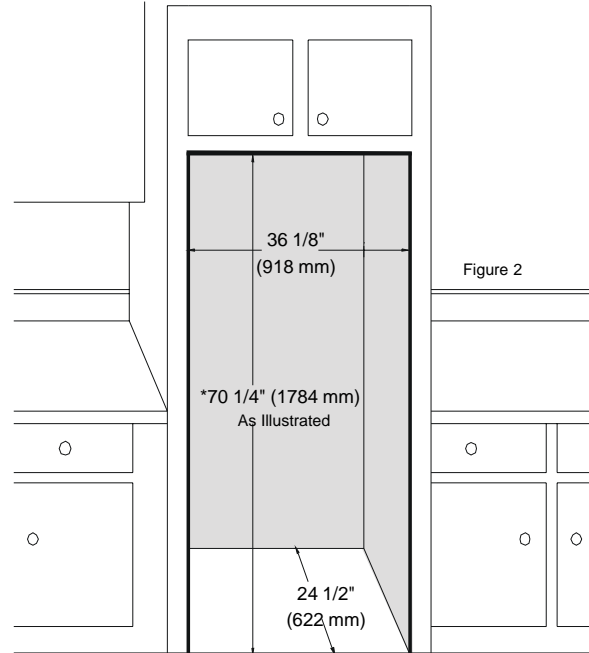
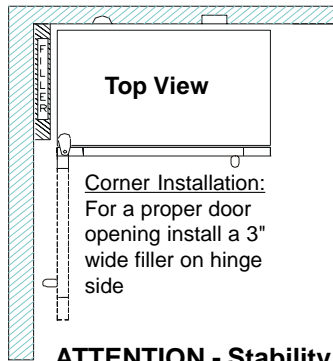
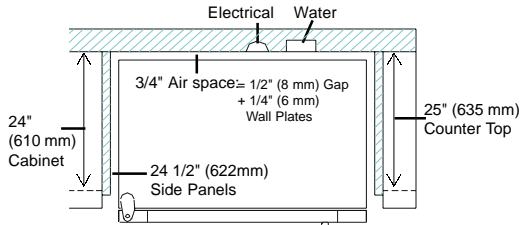
Model 3310 Metro II - 36" Refrigerator

Allow the following clearances for ease of installation, proper air circulation, plumbing and electrical connections:

- Sides1/4" (6 mm) per side
- Top1" (25 mm)
- Back3/4" (19 mm)

Note: If Refrigerator must be installed beside a stove, it is important there be at least 5" (125cm) between the two appliances

Dimensions and Specifications:



*Dimensions include clearances required

ATTENTION - Stability Precaution

To prevent the refrigerator from tipping forward, you must do one of the following:

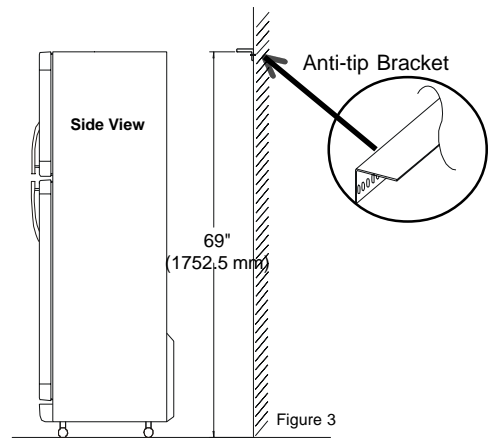
- a) Alcove Installation (Figure 2)
- b) Anti-tip Bracket Installation (Figure 3)

Anti-tip Bracket is shipped attached to the back of the refrigerator (top corner) and installed as follows:

- locate and mark 3 wall studs at 68 1/4" from the floor.
- Install the anti tip bracket supplied (as shown in Figure 3)
- Secure the bracket to the marked positions on the wall, with a minimum of three (3) wood screws penetrating at least 3/4" (19 mm) into wall studs.
- Bracket distance to the floor is to be 69" after completion of installation

Installation:

- Slide unit into alcove or openings
- Raise rear of unit by turning the 5/16" rear roller adjustment screw clockwise until the unit is snug against the anti tip bracket (figure 3), or the top cabinetry in an alcove installation (Figure 2).
- Raise front of unit by turning the 3/8" adjustment screw clockwise until the unit is level.
- Adjust the front "stability leg" securely against the floor



Electrical Requirements:

- The refrigerator should always be plugged into its own individual electrical outlet, which has a voltage rating of 115 Volts, 10 Amps.
- Have the wall outlet and circuit checked by a licensed electrician to make sure the outlet is properly grounded.
- Unit supplied with a 5 foot power cord (location shown in Figure 4).

Water Line:

- The water pressure must be between 20 psi & 120 psi.
- Use Copper tubing 1/4" outer diameter. (Be sure both ends of the tubing are cut square)
- In line water filter and shut off valve must be installed in an accessible location

To Determine how much tubing you need:

- Measure the distance from the water valve on the back of the refrigerator to the water supply pipe.
- Then add 8 feet (244 cm).
- The extra tubing should be coiled into 3 turns of about 10 inches (25 cm) diameter to allow the refrigerator to move out from the wall after installation (as shown in Figure 4).

